

Ex-safety switches



3-pole, 20 A

Technical data

5

Ex-safety switches 20 A for controlled three-phase drives

| | | |
|---------------------------------------------------------|--------------------------------------------------------------------------------------------------------------------------------------------------------------------------------------|-----------------------|
| Marking accd. to 94/9/EC | Ⓔ II 2 G Ex ed ia IIC T6 / Ⓔ II 2 D Ex tD A21 IP66 T80 °C | |
| EC-Type Examination Certificate | PTB 99 ATEX 1161 | |
| IECEX Certificate of Conformity | BKI 07.0012 | |
| Marking accd. to IECEx | Ex ed ia IIC T6 Ex tD A21 IP66 T55 °C | |
| Permissible ambient temperature | -20 °C up to +40 °C ¹⁾ | |
| Rated voltage | up to max. 690 V | |
| Rated current | max. 20 A | |
| Frequency | 50/60 Hz | |
| Rated making/breaking capacity AC-3 accd. EN 60947-3 | U _e 230 V / I _e 20 A U _e 400 V / I _e 20 A U _e 500 V / I _e 16 A U _e 690 V / I _e 10 A | |
| Back-up fuse | up to 400 V AC: 35 A gL up to 500 V AC: 35 A gL up to 690 V AC: 25 A gL | |
| Connecting terminals | main contact | 2 x 4 mm ² |
| | auxiliary/signal contact | 2 x 4 mm ² |
| Protection class | I | |
| Degree of protection accd. to EN 60529 | IP66 | |
| Cable glands/enclosure drilling | M25 (d = 8 - 17.5 mm) see ordering details M32 (d = 12 - 21 mm) see ordering details Option: metal flange with 2 x thread | |
| Weight | approx. 1.48 kg | |
| Enclosure material | glass-fibre reinforced polyester | |
| Enclosure colour | black | |
| Aux. contact | 1 x NO making - lagging; breaking - leading 1 x NC making - leading; breaking - lagging | |
| Safety interlock for electronics | 1 x NO making - lagging; breaking - leading | |
| Padlocking facility | can be locked in OFF position with 3 commercially available padlocks (Ø max. 6 mm) | |

¹⁾ Other ambient temperatures on request



3-pole, 20 A

Ordering details

| Content | Cable gland | Order No. |
|--------------------------------------------------------------------------------------------------------|-------------------|--------------------|
| Safety switch 20 A | | |
| Version with 2 auxiliary contacts (1 NO; 1 x NC), 1 x Safety interlock for electronics (1 x NO) | | |
| 3-pole | 2 x M32 / 2 x M25 | GHG 262 0014 R0001 |

Customized version on request, auxiliary contacts in Ex ia available

Accessories

Mounting plate for Ex-safety switches 20 A controlled three-phase drives

| Type | Application | Fixing method | Order No. |
|--------|-----------------------|--------------------|--------------------|
| Size 3 | Wall mounting | screwless mounting | GHG 610 1953 R0118 |
| Size 3 | Pipe clamp | screwless mounting | GHG 610 1953 R0110 |
| Size 3 | Trellis-work mounting | screwless mounting | GHG 610 1953 R0118 |

Accessories for mounting plates

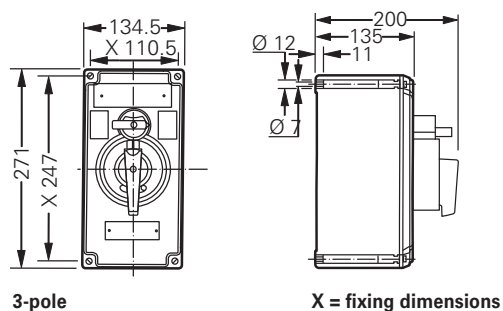
| Type | OU | Order No. |
|--------------------------------------------------------------------------------|----|--------------------|
| Label holder with label (unlabelled) for mounting plate size 1, 2, 2A and 3 | 10 | GHG 610 1953 R0057 |
| Mounting set for pipes 1" (of 27 - 30 mm) for mounting plates with pipe fixing | 10 | GHG 610 1953 R0020 |

Accessories for canopies plates

| Type | Application | OU | Order No. |
|---------|---------------------------------------------------------|----|--------------------|
| Size 3 | for pipe mounting plate size 3 vertical | 1 | GHG 610 1955 R0104 |
| Size 3A | for mounting plates wall/trellis fixing size 3 vertical | 1 | GHG 610 1955 R0105 |
| Size 3 | for mounting plates pipe fixing size 3 horizontal | 1 | GHG 610 1955 R0106 |

Please pay attention that only order units (OU) according to the ordering details can be delivered.

Dimension drawing




3-pole, 40 A

Technical data

5

Ex-safety switches 40 A for controlled three-phase drives

| | | |
|---------------------------------------------------------|--------------------------------------------------------------------------------------------------------------------------------------------------------------------------------------|------------------------|
| Marking accd. to 94/9/EC | Ⓔ II 2 G Ex ed ia IIC T6 / Ⓔ II 2 D Ex tD A21 IP66 T80 °C | |
| EC-Type Examination Certificate | PTB 99 ATEX 1161 | |
| IECEX Certificate of Conformity | BKI 07.0012 | |
| Marking accd. to IECEx | Ex ed ia IIC T6 Ex tD A21 IP66 T53 °C | |
| Permissible ambient temperature | -20 °C up to +40 °C ¹⁾ | |
| Rated voltage | up to max. 690 V | |
| Rated current | max. 40 A | |
| Frequency | 50/60 Hz | |
| Rated making/breaking capacity AC-3 accd. EN 60947-3 | U _e 230 V / I _e 40 A U _e 400 V / I _e 40 A U _e 500 V / I _e 40 A U _e 690 V / I _e 32 A | |
| Back-up fuse | up to 400 V AC: 80 A gL up to 500 V AC: 80 A gL up to 690 V AC: 63 A gL | |
| Connecting terminals | main contact | 2 x 16 mm ² |
| | auxiliary/signal contact | 2 x 4 mm ² |
| Protection class | I | |
| Degree of protection accd. to EN 60529 | IP66 | |
| Cable glands/enclosure drilling | M25 (d = 8 - 17.5 mm) see ordering details M40 (d = 17 - 28 mm) see ordering details M50 (d = 22 - 35 mm) see ordering details Option: metal flange with 2 x thread | |
| Weight | approx. 4.3 kg | |
| Enclosure material | glass-fibre reinforced polyester | |
| Enclosure colour | black | |
| Aux. contact | 1 x NO making - lagging; breaking - leading 1 x NC making - leading; breaking - lagging | |
| Safety interlock for electronics | 1 x NO making - lagging; breaking - leading | |
| Padlocking facility | can be locked in OFF position with 3 commercially available padlocks (Ø max. 6 mm) | |

¹⁾ Other ambient temperatures on request



3-pole, 40 A

Ordering details

| Content | Cable gland | Order No. |
|--------------------------------------------------------------------------------------------------------|-------------------|--------------------|
| Safety switch 40 A 3-pole | | |
| Version with 2 auxiliary contacts (1 NO; 1 x NC), 1 x Safety interlock for electronics (1 x NO) | | |
| 3-pole | 2 x M40 / 2 x M25 | GHG 263 0053 R0001 |

Customized version on request, auxiliary contacts in Ex ia available

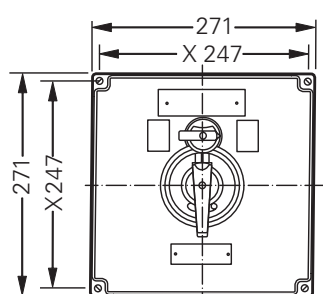
Accessories

| Mounting plate for Ex-safety switches 125 A/180 A 3-pole | | | |
|----------------------------------------------------------|----------------|------------------------|--------------------|
| Type | Application | Fixing method | Order No. |
| Size 3 | 2 x pipe clamp | screw-on ¹⁾ | GHG 610 1953 R0110 |

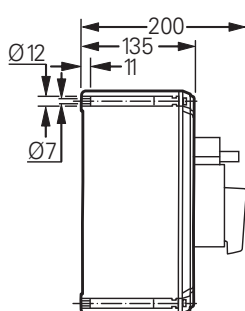
¹⁾ observe mounting distance

| Accessories for mounting plates | | |
|--------------------------------------------------------------------------------|----|--------------------|
| Type | OU | Order No. |
| Label holder with label (unlabelled) for mounting plate size 1, 2, 2A and 3 | 10 | GHG 610 1953 R0057 |
| Mounting set for pipes 1" (of 27 - 30 mm) for mounting plates with pipe fixing | 10 | GHG 610 1953 R0020 |

Please pay attention that only order units (OU) according to the ordering details can be delivered.



Ex-safety switches 40 A



X = fixing dimensions

Ex-safety switches



3-pole, 80 A

Technical data

5

Ex-safety switches 80 A for controlled three-phase drives

| | |
|---------------------------------------------------------|--------------------------------------------------------------------------------------------------------------------------------------------------------------------------------------|
| Marking accd. to 94/9/EC | II 2 G Ex de IIC T6 / II 2 D Ex tD A21 IP66 T80 °C |
| EC-Type Examination Certificate | PTB 00 ATEX 1091 |
| IECEX Certificate of Conformity | BKI 07.0010 |
| Marking accd. to IECEx | Ex ed ia II T6 Ex tD A21 IP66 T53 °C |
| Permissible ambient temperature | -20 °C up to +40 °C ¹⁾ |
| Rated voltage | up to max. 690 V |
| Rated current | max. 80 A |
| Frequency | 50/60 Hz |
| Rated making/breaking capacity AC-3 accd. EN 60947-3 | U _e 230 V / I _e 80 A U _e 400 V / I _e 80 A U _e 500 V / I _e 80 A U _e 690 V / I _e 63 A |
| Back-up fuse | up to 400 V AC: 160 A gL up to 500 V AC: 160 A gL up to 690 V AC: 160 A gL |
| Connecting terminals | main contact 2 x 25 mm ² auxiliary-/Signal contact 2 x 4 mm ² |
| Protection class | I |
| Degree of protection accd. to EN 60529 | IP66 |
| Cable glands/enclosure drilling | M25 (d = 8 - 17.5 mm) see ordering details M40 (d = 17 - 28 mm) see ordering details M50 (d = 22 - 35 mm) see ordering details Option: metal flange with 2 x thread |
| Weight | approx. 7.25 kg |
| Enclosure material | glass-fibre reinforced polyester |
| Enclosure colour | black |
| Aux. contact | 1 x NO making - lagging; breaking - leading 1 x NC making - leading; breaking - lagging |
| Safety interlock for electronics | 1 x NO making - lagging; breaking - leading |
| Padlocking facility | can be locked in OFF position with 3 commercially available padlocks (Ø max. 6 mm) |

¹⁾ Other ambient temperatures on request



3-pole, 80 A

Ordering details

| Content | Cable gland | Order No. |
|--------------------------------------------------------------------------------------------------------|-------------------|--------------------|
| Safety switch 80 A 3-pole | | |
| Version with 2 auxiliary contacts (1 NO; 1 x NC), 1 x Safety interlock for electronics (1 x NO) | | |
| 3-pole | 2 x M50 / 2 x M25 | GHG 264 0024 R0001 |

Customized version on request, auxiliary contacts in Ex ia available

Accessories

Mounting plate for Ex-safety switches 80 A controlled three-phase drives

| Type | Application | Fixing method | Order No. |
|--------|----------------|------------------------|--------------------|
| Size 3 | 2 x pipe clamp | screw-on ¹⁾ | GHG 610 1953 R0110 |

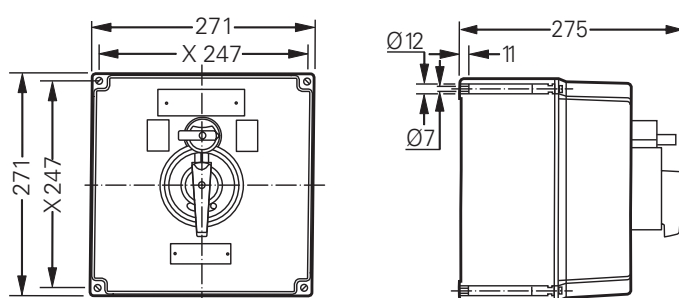
¹⁾ observe mounting distance

Accessories for mounting plates

| Type | OU | Order No. |
|--------------------------------------------------------------------------------|----|--------------------|
| Label holder with label (unlabelled) for mounting plate size 1, 2, 2A and 3 | 10 | GHG 610 1953 R0057 |
| Mounting set for pipes 1" (of 27 - 30 mm) for mounting plates with pipe fixing | 10 | GHG 610 1953 R0020 |

Please pay attention that only order units (OU) according to the ordering details can be delivered.

Dimension drawing



Ex-safety switches 80 A

X = fixing dimensions