

# Insulated (Exd/Exe) adaptors - DBU Series



Type DBU

## Technical specification

Code of protection categories
ATEX: II 2 GD, Ex db IIC Gb, Ex eb IIC Gb, Ex tb IIIC Db
IECEX: Ex db IIC Gb, Ex eb IIC Gb, Ex tb IIIC Db
Compliance standards
ATEX: EN 60079-0, EN 60079-1, EN 60079-7, EN 60079-31
IECEX: IEC 60079-0, IEC 60079-1, IEC 60079-31, IEC 60079-7
Certificate details
ATEX: Sira 00ATEX1073U; ITS16ATEX101088X
IECEX: IECEX ITS 16.0049X
Temperature
Temperature range -20°C to +130°C
Part number:
Please refer to page numbering system

## Features

- International Ex approvals
- IP54
- Available in brass, stainless steel, mild steel and aluminium
- Glass filled nylon insulating material

## Benefits

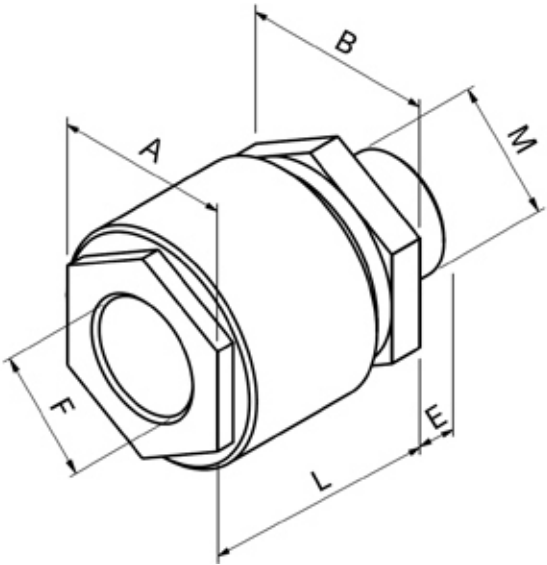
- Provides method of insulating connection device from the equipment
- Allows armour current to be controlled in a positive manner
- Inspection of grounding made easy

## Materials

- Brass CZ121
- 316 stainless steel
- Mild steel
- Aluminium

## Threadforms

- Metric
- NPT
- NPSM
- PG
- ISO pipe (BSP)
- ET



## Dimensions

Size	Total length (A)	Male length (B)
M16	64.00 (min.)	15.00 (min.)
M20	64.00 (min.)	15.00 (min.)
M25	64.00 (min.)	15.00 (min.)
M32	64.00 (min.)	15.00 (min.)
M40	64.00 (min.)	15.00 (min.)
M50	64.00 (min.)	15.00 (min.)
M63	64.00 (min.)	15.00 (min.)
M75	64.00 (min.)	15.00 (min.)

# Part numbering system

## Codes

Page No.	Product	Digits 1 & 2
Adaptors and reducers		
14-17	<b>AD</b>	Adaptor
14-17	RD	Reducer
19	AY	'Y' adaptor
20	AT	'T' adaptor
21	AR	90° adaptor
22	AS	45° adaptor
18	TA	Swivel - in-line male to female
18	TC	Swivel - in-line female to female
18	TD	Swivel - in-line male to male
18	TP	Swivel - 90° male to female
18	TQ	Swivel - 90° female to female
18	TR	Swivel - 90° male to male
22	AM	Male to male adaptor
23	AF	Female to female adaptor
24-25	DB	Insulated adaptor
Stopping Plugs		
26-27	PD	Dome head plug
28	PA	Type A plug
28	PB	Type B plug
Breather Drains		
31	DP	Breather drain (Exe)
32	BD	Breather drain (Exde)
Other products		
33	SB	Stopper box (rigid conduit/cable gland)
34	UN	Union - male to female
34	UF	Union - female to female
35	AE	Earth lead adaptor
36	ET	Threaded earth plate
37	FX	Stopper box (flexible conduit)

Certification	Digit 3
<b>U</b>	Exd I and IIC & Exe I and IIC
E	Exe I and IIC
F	Industrial (marked product)

Material	Digit 4
<b>1</b>	Brass
2	Mild steel
3	Stainless steel
4	Glass filled nylon
5	Aluminium
6	Nylon 6
7	Red fibre

Plating	Digit 5
0	Unplated
<b>1</b>	Electroless nickel
2	Zinc
6	Chromatised

## Example

Digits1 & 2	Digit 3	Digit 4	Digit 5	Digits 6 & 7	Digits 8 & 9
<b>AD</b>	<b>- U</b>	<b>1</b>	<b>- 1</b>	<b>- 29</b>	<b>- 04</b>
Adaptor	Exd/e certified	Brass	Nickel-plated	1/2" NPT (male)	M20 (female)

Always quote male thread first.

# Part numbering system

**Male thread – digits 6 & 7, female thread – digits 8 & 9** Note: threadform codes below to be used for both male and female threads.

Metric	ET imperial conduit	NPT	NPSM	ISO pipe parallel (BSPP)	ISO pipe taper (BSPT)	PG
02 M12						
03 M16	17 5/8" ET	29 1/2" NPT	42 1/2" NPSM	55 1/2" BSPP	68 1/2" BSPT	79 PG7
04 M20	18 3/4" ET	30 3/4" NPT	43 3/4" NPSM	56 3/4" BSPP	69 3/4" BSPT	80 PG9
05 M25	19 1" ET	31 1" NPT	44 1" NPSM	57 1" BSPP	70 1" BSPT	81 PG11
06 M32	20 1 1/4" ET	32 1 1/4" NPT	45 1 1/4" NPSM	58 1 1/4" BSPP	71 1 1/4" BSPT	82 PG13.5
07 M40	21 1 1/2" ET	33 1 1/2" NPT	46 1 1/2" NPSM	59 1 1/2" BSPP	72 1 1/2" BSPT	83 PG16
08 M50	22 2" ET	34 2" NPT	47 2" NPSM	60 2" BSPP	73 2" BSPT	84 PG21
09 M63	23 2 1/2" ET	35 2 1/2" NPT	48 2 1/2" NPSM	61 2 1/2" BSPP	74 2 1/2" BSPT	85 PG29
10 M75	24 3" ET	36 3" NPT	49 3" NPSM	62 3" BSPP	75 3" BSPT	86 PG36
11 M80 x 2.0	ET Special	37 3 1/2" NPT	50 3 1/2" NPSM	63 3 1/2" BSPP	76 3 1/2" BSPT	87 PG42
12 M85 x 2.0		38 4" NPT	51 4" NPSM	64 4" BSPP	77 4" BSPT	88 PG48
13 M90 x 2.0		NT Special	NS Special	BP Special	BT Special	PG Special
14 M100 x 2.0						
15 M110 x 2.0						
BZ M120 x 2.0						
MT Special						

## Part numbering system for DPE breather drains only (page 31)

Product	Certification	Material	Plating	Thread type	Thread length	Hole position	Castellated I/nut
DP Standard	E Exe I and IIC	1 Brass	0 Unplated	04 M20	S1 10mm	2 Holes	With
		3 S/steel	1 E/nickel	05 M25	S2 10mm	2 Holes	Without
		4 GF Nylon	2 Zinc	06 M32	S3 15mm	3 Holes	With
				29 1/2" NPT	S4 15mm	3 Holes	Without
				30 3/4" NPT			
				31 1" NPT			

Note: Glass filled nylon version is only available in S3 and S4 options and is supplied complete with a brass castellated locknut.  
NPT threaded breather drains are only available in S3 and S4 options.

### Example

Standard	Exe I and IIC		Stainless steel		Unplated		M20		10mm	
DP	-	E	-	3	-	0	-	04	-	S1

## Part numbering system for BDU breather drains only (page 32)

Product	Certification	Material	Plating	Thread	O-ring
BD Standard	U Exd I and IIC and Exe I and IIC	1 Brass	0 Unplated	04 M20	D0 no O-ring
		3 Stainless steel	1 Electroless nickel	05 M25	D1 Silicone
			2 Zinc	29 1/2" NPT	D2 Fluorosilicone
				30 3/4" NPT	D3 Viton
					D4 EPDM
					D5 Neoprene
					D6 Nitrile

### Example

Standard	Exd I and IIC and Exe I and IIC	Stainless steel	Unplated	M20	Silicone O-ring					
BD	-	U	-	3	-	0	-	04	-	D1