

Condulet EAB conduit outlet boxes with covers

Cl. I, Div. 1 & 2, Groups A, B, C, D
Cl. II, Div. 1, Groups E, F, G
Cl. II, Div. 2, Groups F, G
Cl. III
NEMA 3, 4, 7ABCD, 9EFG

Explosionproof
Dust-ignitionproof
Raintight
Wet Locations

3F

Applications:

EAB conduit outlet boxes are installed in conduit systems within hazardous areas to:

- Provide protection against exterior explosion where acetylene, hydrogen and other hazardous gases are present
- Protect conductors in threaded rigid conduit
- Act as pull and splice boxes
- Interconnect lengths of conduit
- Change conduit direction
- Provide access to conductors for maintenance and future system changes

Features:

EAB conduit outlet boxes have:

- Five different hub configurations
- Taper threaded hubs to provide ground continuity
- Smooth integral hub bushing to protect conductor insulation when pulling
- Threaded cover openings
- Surface covers furnished with boxes
- Neoprene o-ring gasket and green ground screw are both standard
- Four standard mounting pads, except for EABY
- Cover threads are 16 pitch
- Internal green ground screw #10

Certifications and compliances:

NEC/CEC:

- Class I, Divisions 1 & 2, Groups A, B, C, D
- Class II, Division 1, Groups E, F, G
- Class II, Division 2, Groups F, G
- Class III

UL standard:

- UL1203

CSA standard:

- C22.2 No. 30

Standard materials:

- Bodies – Feraloy iron alloy
- Covers – copper-free aluminum

Standard finishes:

- Feraloy – electrogalvanized and aluminum acrylic paint
- Aluminum – natural

Size ranges:

- Hub – 1/2" to 1"
- Cover opening – 3" diameter

Options:

Description

Suffix

- Bodies – copper-free aluminum **SA**
- Covers – Feraloy iron alloy..... **WOD**
Electrogalvanized and aluminum acrylic paint finish
- Corro-free epoxy powder coat..... **S752**

Ordering information:

EABC



Hub size	Cat. #
1/2"	EABC16 ^A
3/4"	EABC26 ^A
1"	EABC36 ^A

EABT



Hub size	Cat. #
1/2"	EABT16 ^A
3/4"	EABT26 ^A
1"	EABT36 ^A

EABL



Hub size	Cat. #
1/2"	EABL16 ^A
3/4"	EABL26 ^A
1"	EABL36 ^A

EABX



Hub size	Cat. #
1/2"	EABX16 ^A
3/4"	EABX26 ^A
1"	EABX36 ^A

EABY



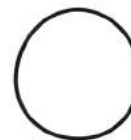
Hub size	Cat. #
1/2"	EABY16
3/4"	EABY26

Replacement cover



Size	Cat. #
3"	EAB06

Replacement o-ring gasket



Description	Cat. #
Replacement o-ring	GASK1151

Fixture cover Union hub type



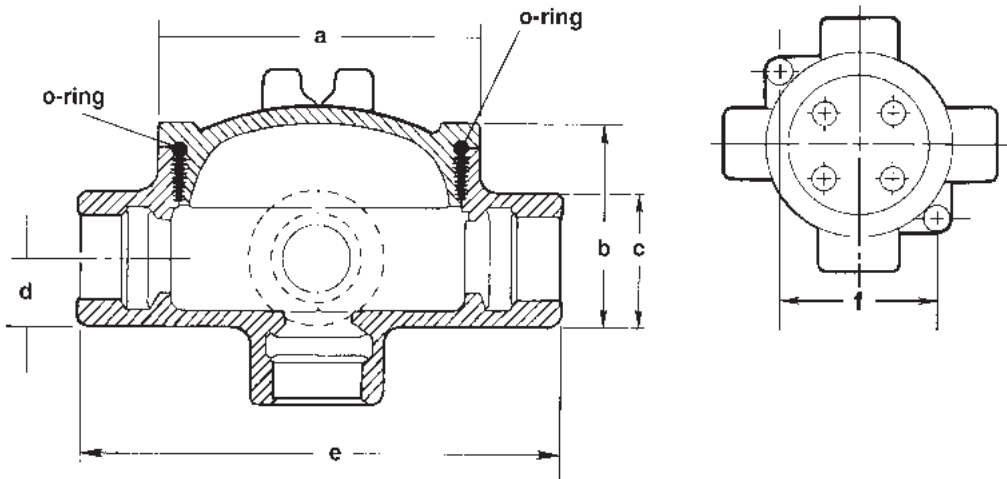
Cover opening dia.	Fixt. stem size	Cat. #
3"	3/4"	EAB0687 ^B

^A Available in copper-free aluminum. To order, add suffix 'SA' to end of catalog number.

^B EAB0687 is listed for Groups C and D only.

Condulet EAB conduit outlet boxes

Dimensions (in inches):



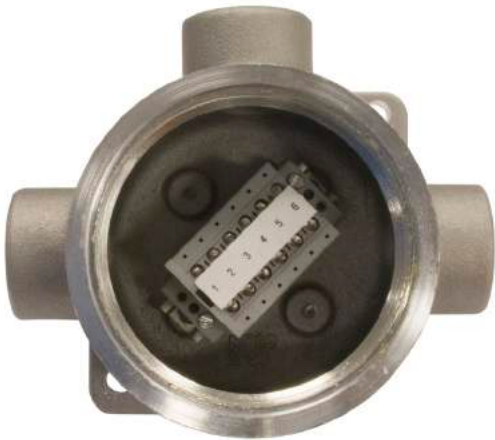
Cat. #	a	b	c	d	e	f
16	3 ³ / ₄	2 ¹⁷ / ₃₂	1 ¹ / ₂	3 ³ / ₄	5 ⁵ / ₁₆	3 ³ / ₃₂
26	3 ³ / ₄	2 ²⁵ / ₃₂	1 ³ / ₄	7 ¹ / ₈	5 ⁹ / ₁₆	3 ³ / ₃₂
36	3 ³ / ₄	2 ²⁵ / ₃₂	1 ³ / ₄	7 ¹ / ₈	5 ⁹ / ₁₆	3 ³ / ₃₂

Ordering information – factory installed terminal block ordering guide:

DIN rail mounted terminal blocks

Electrical specifications:
30A, 150V, AWG 26-10

Cat. #	Description
DIN12	DIN rail mounted, 2 terminal blocks EAB (shapes C, X, T, L) Form 6 cover diameter opening
DIN13	DIN rail mounted, 3 terminal blocks EAB (shapes C, X, T, L) Form 6 cover diameter opening
DIN14	DIN rail mounted, 4 terminal blocks EAB (shapes C, X, T, L) Form 6 cover diameter opening



Direct mounted terminal blocks

Electrical specifications:
30A, 300V, AWG 26-10

Cat. #	Description
TB14	Direct mounted terminal block, 4 terminal blocks EAB (shapes C, X, T, L) Form 6 cover diameter opening
TB16	Direct mounted terminal block, 6 terminal blocks EAB (shapes C, X, T, L) Form 6 cover diameter opening



Condulet EAB ATEX conduit outlet boxes with covers

Cl. I, Div. 1 & 2, Groups A, B, C, D
Cl. II, Div. 1 & 2, Groups E, F, G
II 2 G EEx d IIC T5
PTB 05 ATEX 1052
Type 4 Enclosure; IP66

Explosionproof
Dust-ignitionproof
Raintight
Wet Locations

Applications:

EAB ATEX conduit outlet boxes are installed in conduit systems within hazardous areas to:

- Provide protection against exterior explosion where acetylene, hydrogen and other hazardous gases are present
- Protect conductors in threaded rigid conduit
- Act as pull and splice boxes
- Interconnect lengths of conduit
- Change conduit direction
- Provide access to conductors for maintenance and future system changes

Features:

EAB ATEX conduit outlet boxes have:

- Two different hub configurations
- Taper threaded hubs to provide ground continuity
- Smooth integral hub bushing to protect conductor insulation when pulling
- Threaded cover openings
- Surface covers furnished with boxes
- Neoprene o-ring gasket and green ground screw are both standard
- Cover threads are 16 pitch
- Internal green ground screw #10

Certifications and compliances:

NEC/CEC:

- Class I, Divisions 1 & 2, Groups A, B, C, D
- Class II, Divisions 1 & 2, Groups E, F, G
- Class III
- II 2 G EEx d IIC T5
- PTB 05 ATEX 1052
- Enclosure Type 4, IP66

UL standard:

- UL1203

CSA standard:

- cUL Listed to CSA standard: C22.2 No. 30

Standard materials:

- Bodies – Feraloy iron alloy or copper-free aluminum
- Covers – copper-free aluminum

Standard finishes:

- Feraloy – electrogalvanized and aluminum acrylic paint
- Aluminum – natural

Options:

Description

- Corro-free epoxy powder coat..... **S752**

Suffix

Ordering information:

EABX



Hub size	Body material	Cat. #
1/2"	Feraloy iron	EABX16 ATEX
3/4"	Feraloy iron	EABX26 ATEX
1"	Feraloy iron	EABX36 ATEX
1"	Copper-free aluminum	EABX36 SA ATEX

EABY



Hub size	Body material	Cat. #
1/2"	Feraloy iron	EABY16 ATEX
3/4"	Feraloy iron	EABY26 ATEX

Size ranges:

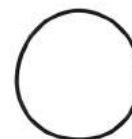
- Hub – 1/2" to 1"
- Cover opening – 3" diameter

Replacement cover



Size	Cat. #
3"	EAB06

Replacement o-ring gasket



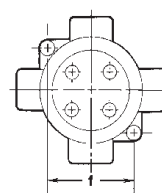
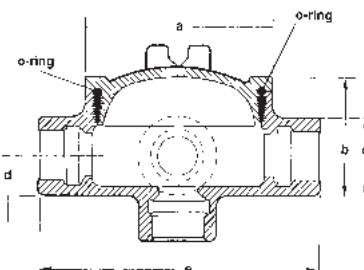
Description	Cat. #
Replacement o-ring	GASK1151

Fixture cover Union hub type



Cover opening dia.	Fixt. stem size	Cat. #
3"	3/4"	EAB0687 ^A

Dimensions (in inches):



Cat. #	a	b	c	d	e	f
16	3/4	2 17/32	1 1/2	3/4	5 5/16	3 3/32
26	3/4	2 25/32	1 3/4	7/8	5 9/16	3 3/32
36	3/4	2 25/32	1 3/4	7/8	5 9/16	3 3/32

^AEAB0687 is listed for Groups C and D only.

Condulet EAJ conduit outlet boxes with covers

Cl. I, Div. 1 & 2, Groups A[Ⓐ], B, C, D
Cl. II, Div. 1, Groups E, F, G
Cl. II, Div. 2, Groups F, G
Cl. III
NEMA 3, 4, 7ABCD, 9EFG

Explosionproof
Dust-ignitionproof
Raintight
Wet Locations

3F
3F

Applications:

EAJ conduit outlet boxes are installed in conduit systems within hazardous areas to:

- Protect conductors in threaded rigid conduit
- Act as pull and splice boxes
- Interconnect lengths of conduit
- Change conduit direction
- Provide access to conductors for maintenance and future system changes
- Act as mounting outlets for fixtures (with appropriate covers)
- Act as sealing fittings (with appropriate covers)

Features:

EAJ conduit outlet boxes have:

- Water shedding cover – suitable for wet locations when mounted in upright position
- External cover threads on body, protecting conductors from damage during pulling
- No pinching of conductors during cover installation
- Six different hub arrangements
- Taper threaded hubs to provide ground continuity
- Smooth integral hub bushing to protect conductor insulation when pulling
- Internally threaded cover openings for additional wiring room
- Flat overlapping threaded covers furnished with boxes
- Weather-resistant finish
- Internal green ground screw #10
- Four standard mounting pads (EAJB has three)

Certifications and compliances:

NEC/CEC:

- Class I, Divisions 1 & 2, Groups A[Ⓐ], B, C, D
- Class II, Division 1, Groups E, F, G
- Class II, Division 2, Groups F, G
- Class III

UL standard:

- UL1203

CSA standard:

- C22.2 No. 30

Standard materials:

- Body – Feraloy iron alloy
- Cover – copper-free aluminum

Standard finishes:

- Feraloy iron alloy – electrogalvanized and aluminum acrylic paint
- Aluminum – natural

Options:

Description Suffix

- Bodies – copper-free aluminum **SA**
- Covers – Feraloy iron alloy..... **WOD**
Electrogalvanized and aluminum acrylic paint finish
- Corro-free epoxy powder coat..... **S752**

Ordering information:

EAJB



Cover opening dia.	Hub size	Cat. #
3 1/16"	1/2"	EAJB16 [Ⓑ]
3 3/16"	3/4"	EAJB26 [Ⓑ]
3 7/16"	1"	EAJB36 [Ⓑ]

EAJC



Cover opening dia.	Hub size	Cat. #
3 1/16"	1/2"	EAJC16 [Ⓑ]
3 3/16"	3/4"	EAJC26 [Ⓑ]
3 7/16"	1"	EAJC36 [Ⓑ]

EAJD



Cover opening dia.	Hub size	Cat. #
3 1/16"	1/2"	EAJD16
3 3/16"	3/4"	EAJD26 [Ⓑ]
3 7/16"	1"	EAJD36 [Ⓑ]

EAJL



Cover opening dia.	Hub size	Cat. #
3 1/16"	1/2"	EAJL16 [Ⓑ]
3 3/16"	3/4"	EAJL26 [Ⓑ]
3 7/16"	1"	EAJL36 [Ⓑ]

EAJT



Cover opening dia.	Hub size	Cat. #
3 1/16"	1/2"	EAJT16 [Ⓑ]
3 3/16"	3/4"	EAJT26 [Ⓑ]
3 7/16"	1"	EAJT36 [Ⓑ]
5"	1 1/4"	EAJT49 [Ⓐ] [Ⓑ]
5"	1 1/2"	EAJT59 [Ⓐ] [Ⓑ]
5"	2"	EAJT69 [Ⓐ] [Ⓑ]

EAJX



Cover opening dia.	Hub size	Cat. #
3 1/16"	1/2"	EAJX16 [Ⓑ]
3 3/16"	3/4"	EAJX26 [Ⓑ]
3 7/16"	1"	EAJX36 [Ⓑ]

Size ranges:

- Hub – 1/2" to 2"
- Cover opening – 3 3/16" to 5" diameter

EAJ threaded covers

Flat covers



Cover opening dia.	Cat. #
3 1/16"	EAJ06
5"	EAJ09

Dome covers



Cover opening dia.	Depth	Cat. #
3 1/16"	2"	EAJ0612

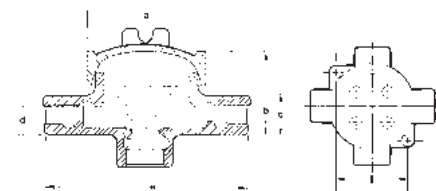
Fixture covers

Union hub type



Cover opening dia.	Fixt. stem size	Cat. #
3 1/16"	3/4"	EAJ0687 [Ⓒ]

Dimensions (in inches):



Cat. #	a	b	c	d	e	f
16	3 3/4	2 11/32	1 1/2	3/4	5 1/16	3 3/32
26	3 3/4	2 25/32	1 3/4	7/8	5 1/16	3 3/32
36	3 3/4	2 25/32	1 3/4	7/8	5 1/16	3 3/32
49	5 3/4	4 1/16	2 7/16	1 3/32	7 13/16	4 3/4
59	5 3/4	4 1/16	3	1 1/2	7 13/16	4 3/4
69	5 3/4	4 1/16	3	1 1/2	7 13/16	4 3/4

[Ⓐ] Form 9 products with 5" cover opening are not suitable for Group A.

[Ⓑ] Available in copper-free aluminum. To order, add suffix 'SA' to end of catalog number.

[Ⓒ] EAJ0687 is listed for Groups C and D only.

Condulet EAJ conduit outlet boxes

Factory installed terminal block ordering guide

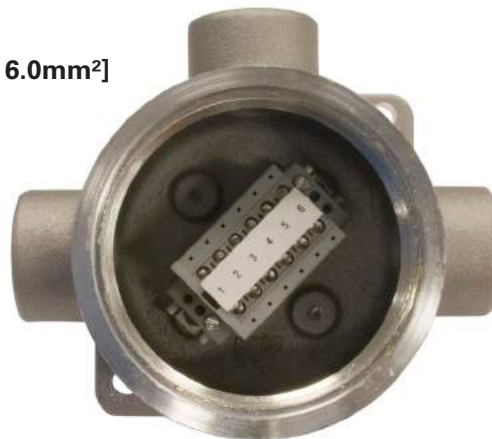
Ordering information:

DIN rail mounted terminal blocks

Electrical specifications:

30A (nominal), 300V (nominal), 24AWG -10AWG [0.2mm² – 6.0mm²]

Cat. #	Description
DIN12	DIN rail mounted, 2 terminal blocks EAJ (shapes X, C, L, T) Form 6 & 9 cover diameter openings
DIN13	DIN rail mounted, 3 terminal blocks EAJ (shapes X, C, L, T) Form 6 & 9 cover diameter openings
DIN14	DIN rail mounted, 4 terminal blocks EAJ (shapes X, C, L, T) Form 6 & 9 cover diameter openings
DIN16	DIN rail mounted, 6 terminal blocks EAJ (shapes X, C, L, T) Form 6 & 9 cover diameter opening
DIN18	DIN rail mounted, 8 terminal blocks EAJ (shape T) Form 9 cover diameter opening
DIN112	DIN rail mounted, 12 terminal blocks EAJ (shape T) Form 9 cover diameter opening



Direct mounted terminal blocks

Electrical specifications:

30A (nominal), 300V (nominal), 26AWG - 10AWG [0.2mm² – 4.0mm²]

Cat. #	Description
TB14	Direct mounted terminal block, 4 terminal blocks EAJ (shapes X, C, L, T) Form 6 & 9 cover diameter openings
TB16	Direct mounted terminal block, 6 terminal blocks EAJ (shapes X, C, L, T) Form 6 & 9 cover diameter openings
TB18	Direct mounted terminal block, 8 terminal blocks EAJ (shape T) Form 9 cover diameter opening
TB112	Direct mounted terminal block, 12 terminal blocks EAJ (shape T) Form 9 cover diameter opening

